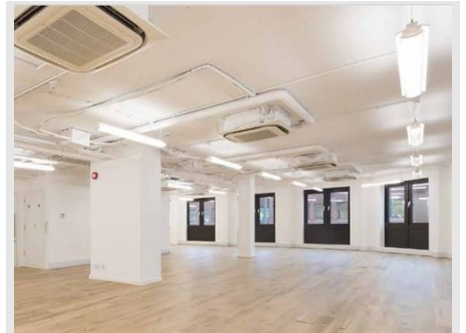


**GROUND FLOOR, PEREGRINE HOUSE, 26-28 PARADISE ROAD,
RICHMOND UPON THAMES, TW9 1SE**



SUMMARY

- **2,276 sq ft (211.52 sq m)**
- **Ground Floor of a five storey Office building**
- **Town Centre Office close to all amenities**
- **Rent: Upon application**

AMENITIES

- **Comfort cooling**
- **Contemporary Exposed Services**
- **Excellent Natural Light**
- **Male & Female WC's**
- **Passenger Lift**
- **Well appointed Reception**



DESCRIPTION

The premises have recently been refurbished to a very high spec and stylish finish, offering bright and expansive office accommodation. The offices are arranged over five floors and include WC facilities on each floor. There is a passenger lift accessing all floors.

ACCOMMODATION

FLOOR	SIZE
Ground Floor	2,276 sq ft (211.52 sq m)
Total	2,276 sq ft (212 sq m)

RENT

Upon application

VAT

VAT is applicable

EPC RATING

Available on request : will be subject to change following refurbishment.

VIEWING

Viewing strictly by prior appointment with the agent:

Dominic Arthur
020 8940 2266
d.arthur@martincampbell.co.uk

Richard Farndale
020 8940 2266
r.farndale@martincampbell.co.uk